

WORLD-CLASS HEAVY-FABRICATING AND WELDING FACILITY,
MOST EQUIPMENT NEW 2012, PLATE ROLL, WELDING MANIPULATORS,
TANK TURNING ROLLS, POSITIONERS, WELDERS AND SUPPORT EQUIPMENT

BidSpotter.com
See Instructions on Page 4
To Become a Qualified Bidder on the Internet

PUBLIC AUCTION

Plant Closed

FORMER ASSETS OF A PRESSURE VESSEL FABRICATOR

2572 Salt Springs Rd. – Youngstown, Ohio 44509

SALE DATE: THURSDAY, MAY 16TH, STARTING AT 9:00 AM

INSPECTION: DAY PRIOR FROM 10:00 AM TO 4:00 PM

All equipment has low hours, facility was opened in 2013 and then was idled in March of 2016



3.54" x 120" Haeusler Model VRM-hy 3050-997 Four-Roll Hydraulic Plate Roll



Esab Model Avenger 2-5 CNC Plasma / Oxy Bevel Head Burning Table



(2) 11' x 11' Pandjiris Model 1100 Welding Manipulators w/ Dual 1,000-Amp Lincoln Power Supplies



(30) 350-Amp and 500-Amp Lincoln Powerwave Dual Wire Feed Welders



35,000 Lb. Hyundai Model 160D-7E Pneumatic Tire Diesel Power Yard Type Lift Truck



Sale Under The Management Of

CINCINNATI INDUSTRIAL AUCTIONEERS

auctioneers | appraisers | since 1961 | cia-auction.com | info@cia-auction.com
2020 Dunlap St., Cincinnati, Ohio 45214 Phone 513-241-9701 Fax 513-241-6760



THURSDAY, MAY 16TH



**NEW
2012**

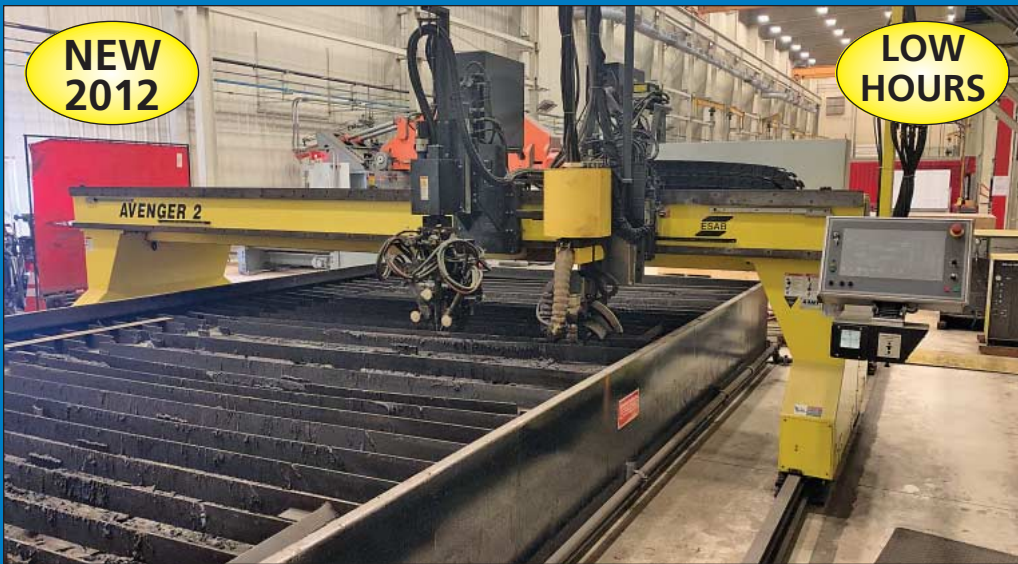
**LOW
HOURS**



PLATE BENDING ROLL
3.54" x 120" Haesler Model VRM-hy 3050-997 Four-Roll Hydraulic Plate Roll; s/n 121-3037 (11/2012), Haesler CNC Control, 6,000 Hours Showing on Hydraulics, 20" Dia. and 30" Dia. Top Rolls, 900-mm Min. Bending Dia. (in relation to top roll), 150-KW Hydraulic Unit (**Manufactured 2012, Installed 2013**)



3.54" x 120" Haesler Model VRM-hy 3050-997 Four-Roll Hydraulic Plate Roll



**NEW
2012**

**LOW
HOURS**



CNC BURNING TABLE
Esab Model Avenger 2-5 CNC Plasma / Oxy Bevel Head Burning Table; s/n 0560953014, CNC Control, 14' x 25' Water Table, 21' Overall Span of Gantry, 33' Length of Tracks, Beveling Plasma and Oxy Heads, Esab Precision Plasma 450 Power Supply, CC-11 Coolant Circulator (**New 2012**)



Esab Model Avenger 2-5 CNC Plasma / Oxy Bevel Head Burning Table



FORMER ASSETS OF PRESSURE VESSEL FABRICATOR



Pandjiris Manipulator Power Supply and Control System



NEW
2012

(2) 11' x 11' Pandjiris Model 1100 Welding Manipulators w/ Dual 1,000-Amp Lincoln Power Supplies

All equipment has low hours, facility was opened in 2013 and then was idled in March of 2016

MORE PHOTOS AVAILABLE @
www.cia-auction.com

WELDING MANIPULATORS

(2) 11' x 11' Pandjiris Model 1100 Welding Manipulators w/ Dual 1,000-Amp Lincoln Power Supplies; s/n 19053x01-1 and 19053x01-3, XIRIS CNC Control, (2) MAXsa-10 Wire Feeds and Controls, 15' Overall Height, 11' Boom Stroke, 11'-10" Max. Boom Height, 17" Min. Boom Height, (2) Lincoln Powerwave AC/DC 1000-SD Power Supplies (New 2012)

• (2) 20 Ton Weldwire Model IWSA-20 Self Aligning Tank Turning Roll Sets; s/n 356752 and 356751, 22,000 Lbs. Load

Capacity, 20" - 137" Suitable Dia., 14" Wheel Dia. (New 2012)

(4) 9' x 9' Preston-Eastin Model MA99AMD Welding Manipulators w/ 1,000-Amp Lincoln Power Supplies; s/n mc99md115, 9' Vert. Travel, 9' Horiz. Travel, 11' Lift Range, 13" Bolt Circle, Model TCV39-96 Manual Cart, 1,000-Amp Lincoln 1000SD Power Supplies (New 2012)

Circle Welding Innovations Model RB-2500 Manipulator Type Circle Burner; s/n F131555, 116" Arm, 82" High, Oxy Torch Head (New 2012)



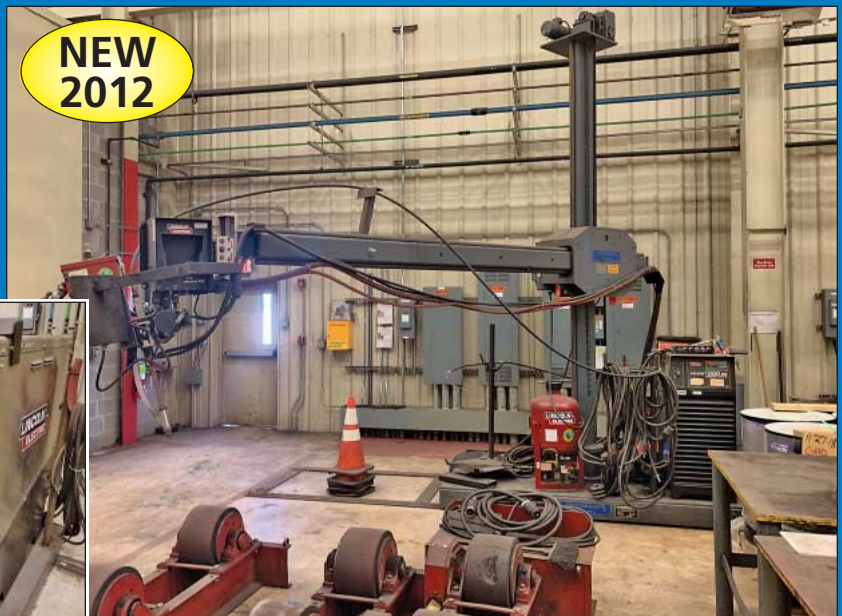
NEW
2012

(4) 9' x 9' Preston-Eastin Model MA99AMD Welding Manipulators w/ 1,000-Amp Lincoln Power Supplies



NEW
2012

Circle Welding Innovations Model RB-2500 Manipulator Type Circle Burner



NEW
2012

(4) 9' x 9' Preston-Eastin Model MA99AMD Welding Manipulators w/ 1,000-Amp Lincoln Power Supplies



**NEW
2012**

(30) 350-Amp and 500-Amp Lincoln Powerwave Dual Wire Feed Welders



**NEW
2012**

(16) 45 Ton to 10 Ton Weldwire Tank Turning Roll Sets



**NEW
2012**

(5) 30/45 Ton Weldwire Model WWRI-30 Tank Turning Roll Sets



TANK TURNING ROLLS

(5) 30/45 Ton Weldwire Model WWRI-30 Tank Turning Roll Sets; Pendant Control, 30 Ton Capacity w/ (1) Drive and (1) Idler, 45 Ton Capacity w/ (1) Drive and (2) Idlers (New 2012)

(3) 20 Ton Weldwire Model WWRI-20 Tank Turning Roll Sets; Pendant Control, 20 Ton Capacity w/ (1) Drive and (1) Idler (New 2012)

(8) 10 Ton Weldwire Model WWRI-10 Tank Turning Roll Sets; Pendant Control, 10 Ton Capacity w/ (1) Drive and (1) Idler (New 2012)

WELD POSITIONERS AND TURNTABLES

(6) 3,000 Lb. Pandjiris Model 30-6 FB Motorized Tilting and Rotating Weld Positioners; s/n 18980x01-7, 3,000 Lb. Capacity @ 6", 742 Lb. Capacity at 42"

(2) 4,000 Lb. Weldwire Model WWTT Motorized Turn Table Positioners (New 2012)

(2) 2,500 Lb. Weldwire Model WWTT Motorized Turn Table Positioners (New 2012)

(2) Team Industries Tilting & Rotating Weld Positioners

WELDERS AND RELATED

(25) 350 Amp Lincoln Powerwave S350 Dual Wire Feed Welders;

Lincoln Power Feed 10M Dual Wire Feeds, Model STT Process Modules (New 2012)

(5) 500 Amp Lincoln Model S500 Dual Wire Feed Welders; Lincoln Power Feed 10M Dual Wire Feeds, Model STT Process Modules (New 2012)

Hypertherm Powermax 125 Plasma Cutting System

Welding Accessories, Tables, Clamps, Oxy Torches, Pipe Stands, Pipe Turners

WELD SIMULATOR

Lincoln Model VRTEX-360 Standard Frequency Virtual Welding Simulator; s/n U8121100020



**NEW
2012**

(6) 3,000 Lb. Pandjiris Model 30-6 FB Motorized Tilting and Rotating Weld Positioners

WEBCAST BIDDER INSTRUCTIONS

➤ **Bidders in the United States** will receive approval forms from our office upon registering for the auction on www.bidspotter.com, pending the Auctioneers review of the information provided you will be approved at the Auctioneers discretion.

➤ **Bidders outside of the United States** must post a deposit of approx. 25% of their planned spending budget or \$10,000.00 minimum with Cincinnati industrial auctioneers in order to be approved to bid. Those who do not post the deposit will not be approved. **period.**



**NEW
2012**

(2) Team Industries Weld Positioners



90 Ton Scotchman Model 9012-24M Hydraulic Ironworker



(2) Team Industries Weld Positioners



Lincoln Model VRTEX-360 Standard Frequency Virtual Welding Simulator



**NEW
2012**

(4) Weldwire Model WWTT Motorized Tables



NEW 2012

(3) 100-HP Atlas Copco Model GA75P Rotary Screw Air Compressors



2007 Bobcat Model S250 2-Speed Skid Steer



NEW 2012

Kardex Remstar Model Shuttle XP-500-2450x864US Automated Storage and Retrieval System

TUBE BENDERS

CML Model TB-1000-VSNC2 Programmable Tube Bender; s/n 9912032 (New 2012)

Big Brute Portable Hydraulic Tube Bender

MISC. MACHINERY

90 Ton Scotchman Model 9012-24M Hydraulic Ironworker; s/n 21484M0705

18" x 22" HEM Model V100-LM3 Tilt Frame Vertical Band Saw; s/n 1151712, Infeed and Outfeed Conveyor

(3) Ridgid Pipe Threaders

Misc. Machinery, Drills, Grinders, Sanders and Related

AIR COMPRESSORS AND RELATED

(2) 100-HP Atlas Copco Model GA75P Rotary Screw Air Compressors; s/n AP1615889 w/ 8,024 Run Hours, 3,024 Loaded Hours, s/n AP1616001 w/ 9,808 Run Hours, 2,110 Loaded Hours, 132 PSI, 459 CFM (New 2012)

100-HP Atlas Copco Model GA75-VSD Rotary Screw Air Compressor; s/n AP1660281 w/ 15,106 Run Hours, 132 PSI, 459 CFM (New 2012)

Atlas Copco Model AD800 Heat Reactivated Regenerative Air Dryer; s/n UTF1206A1, 1700 SCFM, 160 PSIG (New 2012)

Vertical Air Receiving Tank

PARTS STORAGE AND RETRIEVAL SYSTEM

Kardex Remstar Model Shuttle XP-500-2450x864US Automated

Storage and Retrieval System; s/n H/N55/N22D18B/NN75D13/20/07, Tray Size 34" x 96"

FORKLIFTS

35,000 Lb. Hyundai Model 160D-7E Pneumatic Tire Diesel Power Yard Type Lift Truck; s/n HHKHFT08LD0001022, 1,840 Hours, 2-Stage Mast, 148" Mast Height, 157" Lift Height, 96" Forks, 6-Cylinder Cummins 160 HP Diesel Engine, s/n 73304494, Side Shift, Hydraulic Fork Positioning, 12.00- 20MHS Tire Size, 44,619 Lb. Truck Weight

10,000 Lb. Hyster Model H100FT Pneumatic Tire LP Gas Lift Truck; s/n R005V02988K, 3-Stage Mast, 96" Mast Height, 185" Lift Height, 60" Forks, Side Shift, 1,911 Hours

9,000 Lb. Caterpillar Model GC45KSWB Solid Tire LP Gas Lift Truck; s/n AT87A00609, 2-Stage Mast, 96" Mast Height, 149" Lift Height, 5065 Hours

(2) 6,000 Lb. Hyster Model S60FT Solid Tire LP Gas Lift Trucks; s/n H187V06514P w/ 9,015 Hours and H187V06443P, 2-Stage Mast, 88" Mast Height, 130" Lift Height

4,500 Lb. Hyster Model N45ZR-16.5 Stand-Up Electric Reach Truck; s/n C264N03542L, 3-Stage Mast, 126" Mast Height, 278" Lift Height, 24" Reach, 810 Hours

BOBCAT AND PICKUP TRUCK

2011 Chevrolet Silverado LT 4x4 Gasoline Pickup Truck; Vin1gcrkse30bz291405, V-8 Vortec

Engine, Automatic, Tow Package, 89,285 Miles

2007 Bobcat Model S250 2-Speed Skid Steer; s/n 530916004, 907 Hours, With Bucket

9' Snow Wolf Fast Tach Ultra-120 Snow Plow

SHOP AND SUPPORT EQUIPMENT

(2) 2012 - 48' Fontaine Model HCVSF12SAT Flat Bed Trailers; Vin D1559091 and D1559090, 20,000 Lb. Capacity

(3) 40' Storage Containers

Lifting Equipment Including 20 Ton x 102" Spreader Bar, Lifting Magnet, Chains, Clevises and Related

Graco Model Xtreme X70 Pneumatic Paint Pump

Paint Equipment and Supplies; (10) Fireproof Cabinets, Pneumatic Paint Pots and Guns, Supplies and Related

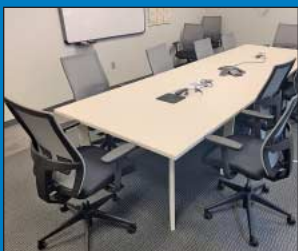
(300+) Lots Late Model Very Clean Hand Tools and Shop Equipment; Pipe Flanges, Pipe Fittings, Hardware, Building and Machine Maintenance Parts, Self-Dumping Hoppers, Heavy Duty Steel Tables and Racks, Air Hose Reels, Ladders, Craftsman Portable Tool Boxes,

OFFICE FURNITURE

Late Model Very Clean Office Furniture; 6-Person Modular Office Units, Free-Standing Managers Offices, Conference Tables, Chairs, Lateral Files, Book Shelves



Late Model Very Clean Tools and Support Equipment

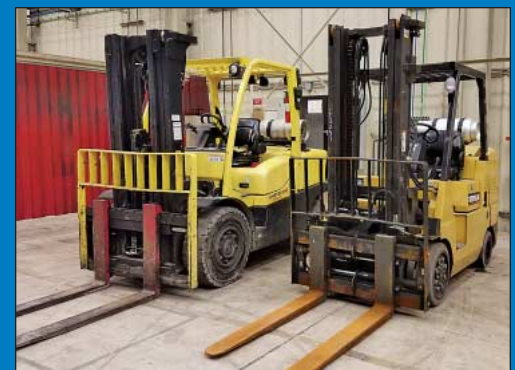


Late Model Very Clean Office Furniture



NEW 2012

CML and Big Brute Tube Benders



(6) Late Model Forklifts to 35,000 Lb. Capacity



(2) 2012 - 48' Fontaine Model HCVSF12SAT Flat Bed Trailers



(200+) Lots Shop and Support Equipment

PUBLIC AUCTION

WORLD-CLASS HEAVY-FABRICATING AND WELDING FACILITY, MOST EQUIPMENT
NEW 2012, PLATE ROLL, WELDING MANIPULATORS, TANK TURNING ROLLS,
POSITIONERS, WELDERS AND SUPPORT EQUIPMENT

Plant Closed

FORMER ASSETS OF A PRESSURE VESSEL FABRICATOR

2572 Salt Springs Rd.
Youngstown, Ohio 44509

SALE DATE:
THURSDAY, MAY 16TH
STARTING AT 9:00 AM

INSPECTION:
Wednesday, May 15th
10:00 AM to 4:00 PM

 **CINCINNATI
INDUSTRIAL
AUCTIONEERS**
auctioneers | appraisers | since 1961

Contact Information
2020 Dunlap St.
Cincinnati, Ohio 45214
Phone 513-241-9701
Fax 513-241-6760
www.cia-auction.com



3' X 10' Plate Roll



(6) Welding Manipulators



12' X 24' Plasma



(50+) Welders

FIRST CLASS MAIL!

PRE-SORT
FIRST CLASS
U.S. POSTAGE
PAID
CINCINNATI, OHIO
PERMIT NO. 3593



Important Mail

TO BE DIRECTED TO THE ATTENTION
OF EXECUTIVE PERSONNEL

THURSDAY, MAY 16TH

PUBLIC AUCTION

Plant Closed

FORMER ASSETS OF A PRESSURE VESSEL FABRICATOR

2572 Salt Springs Rd.
Youngstown, Ohio 44509

IMPORTANT NOTICE:

Although information has been obtained from sources deemed reliable, the auctioneer makes no warranty or guarantee, expressed or implied, as to the accuracy of the information herein contained. It is for this reason that buyers should avail themselves of the opportunity to make inspection prior to the sale. This brochure is intended to provide general information of the equipment being offered and is subject to errors, omissions, additions or deletions. Please check with the Auctioneer's Office for a final listing. Items offered may or may not necessarily be sold as described and/or photographed in this brochure.

MAIL BIDS ACCEPTED WITH A 25% DEPOSIT

DIRECTIONS

From I-80 on the Northside of Youngstown, Ohio Proceed to Exit 226 for Salt Springs Rd. Turn South onto Salt Springs Road, Continue 0.8 Mile to Left Turn to Stay onto Salt Springs Road. Proceed 0.7 Mile to Sale Site on Left. Watch for Auction Parking and Auction Signs.

AUCTIONEERS

Cincinnati Industrial Auctioneers, Inc. –
License No. 63-1983-10439

Jeffrey L. Luggen – License No. 57-1983-33789

Joseph M. Luggen – License No. 2010-0000-19



TERMS OF SALE

All equipment described herein will be sold "as is", "where is" to the highest bidder or bidders for cash in accordance with our regular terms and conditions of sale. Unless other satisfactory arrangements are made, a **25% deposit** in cash, certified or cashier's check payable to Cincinnati Industrial Auctioneers, Inc., is **required on all purchases**. Firm and personal checks accepted only if accompanied by a letter from your bank guaranteeing your funds. All sales are subject to state and/or local taxes unless a signed exemption form is presented at the time of purchase. **All balances are due at the conclusion of the sale.** No merchandise may be removed while the sale is in progress. **All bidders must comply with our Standard Terms of Sale**, copies of which will be available at the sale site or can be obtained from our website.

15% ONSITE BUYER'S PREMIUM
18% ONLINE BUYER'S PREMIUM

Sale Under The Management Of



CINCINNATI INDUSTRIAL AUCTIONEERS

auctioneers | appraisers | since 1961 | cia-auction.com | info@cia-auction.com
2020 Dunlap St., Cincinnati, Ohio 45214 Phone 513-241-9701 Fax 513-241-6760